

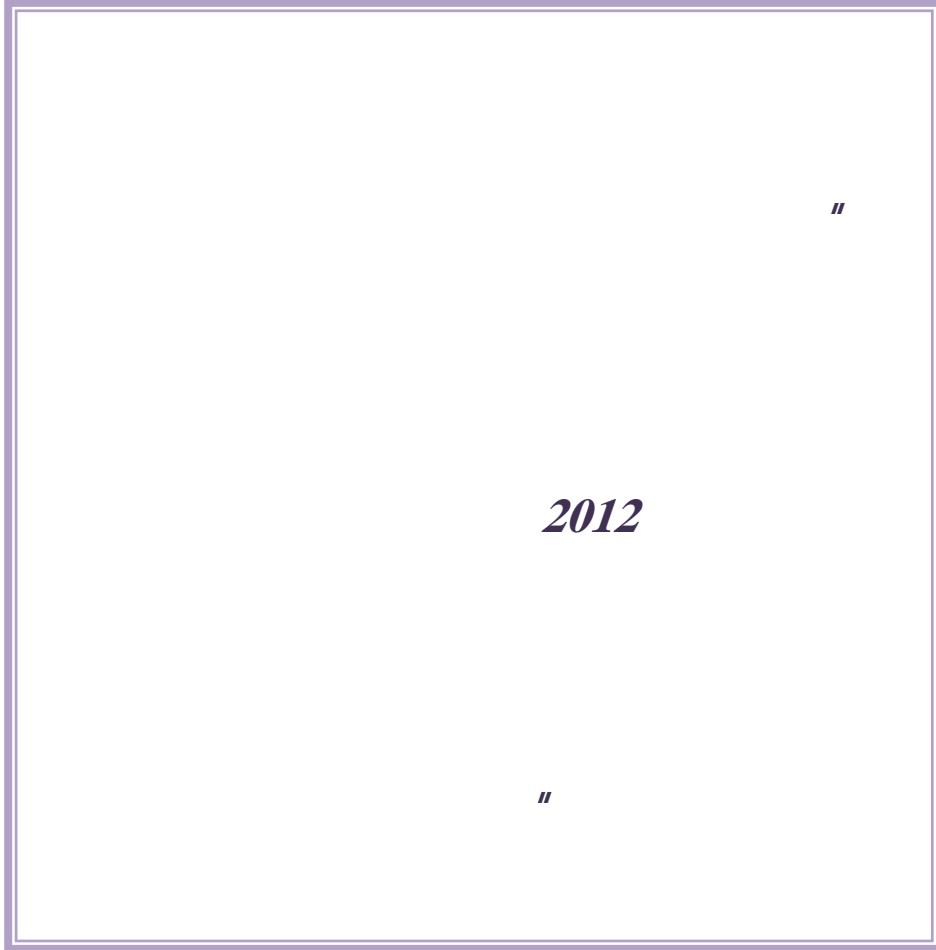


مصرف سورية المركزي
Central Bank of Syria



2012

2012/5/10



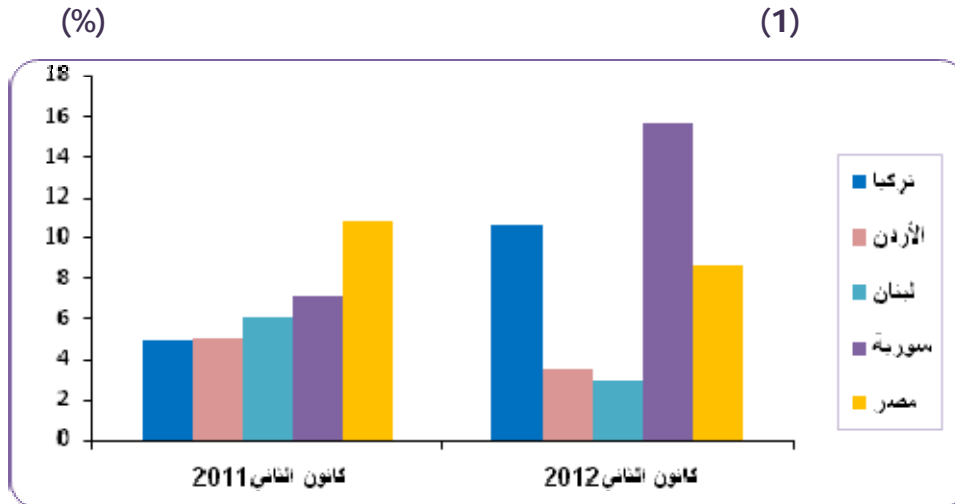
2012			
(Y-O-Y)		2012	
	%8.54	%15.67	2012
	%.%7.13		2011
	(Y-O-Y)		
	%.%4.66	%11.01	2011
(%2.30-)		(%4.43) 2012	(M-O-M)
2011			%.%6.73
%15.67	2012		(Y-O-Y)
		%7.42	%15.80
%3.64		%18.07	
	%1.32	%17.21	
%1.04			
%0.45			%0.63
%0.05	%0.29	%0.34	%0.43
		%.%0.02	%0.04

2012

_____:

2012

2011



_____1: _____1

%15.67 2012

(Y-O-Y)

%.7.13

2011

%8.54

2011

(Y-O-Y)

%.4.66

%11.01

(1)

1

(M-O-M)

(%2.30-)

(%4.43) 2012

(M-O-M)

.%6.73 2011

2012

-2011

(1)

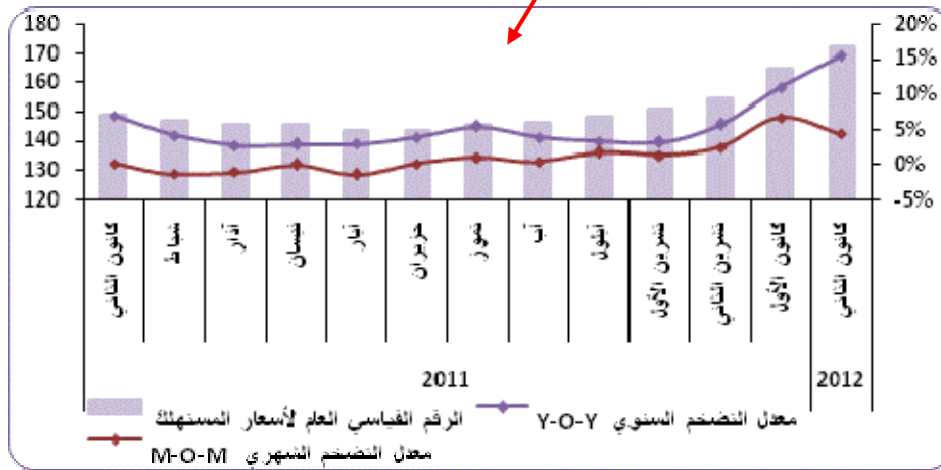
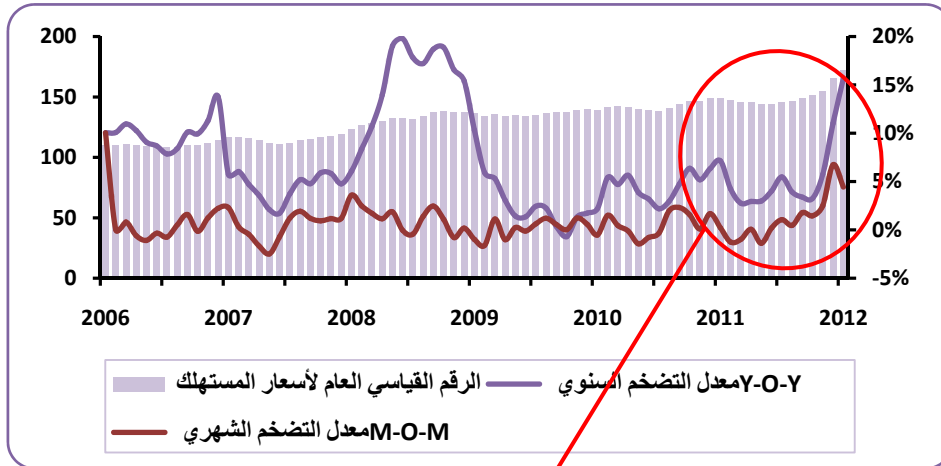
	Yq-O-Yq	** Q-O-Q	()	Y-O-Y	* M-O-M	()		
4.75%	4.68%	0.17%	147.27	7.13%	0.22%	149.02	1	2011
				4.22%	-1.27%	147.13	2	
				2.74%	-1.00%	145.67	3	
	3.30%	-1.90%	144.48	2.93%	0.06%	145.75	4	
				2.99%	-1.39%	143.71	5	
				4.00%	0.18%	143.98	6	
	4.23%	1.60%	146.79	5.46%	1.05%	145.49	7	
				3.90%	0.45%	146.14	8	
				3.38%	1.78%	148.74	9	
	6.69%	6.87%	156.87	3.25%	1.44%	150.88	10	
				5.75%	2.51%	154.66	11	
				11.01%	6.73%	165.06	12	
15.67%				15.67%	4.43%	172.37	1	2012

*

**

:

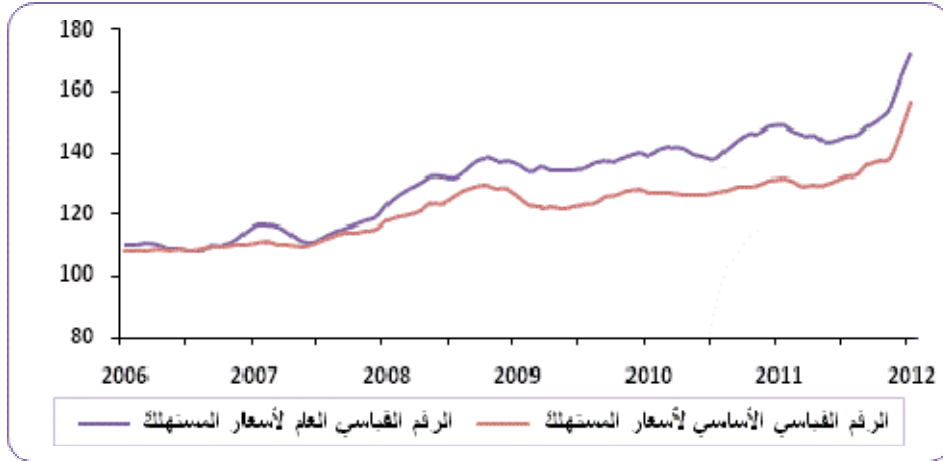
(2)



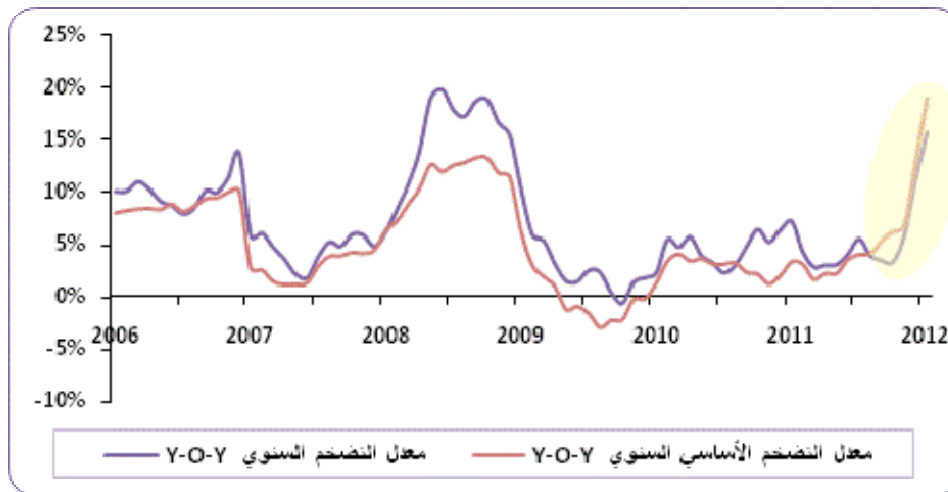
(Core Inflation) -2

	(Y-O-Y)	Core CPI
2011	%15.62	%18.99
2012	%12.68	%3.37
2011	%6.31	
2011		

2012 -2006 (3)



2012 -2006 (4)



()

)

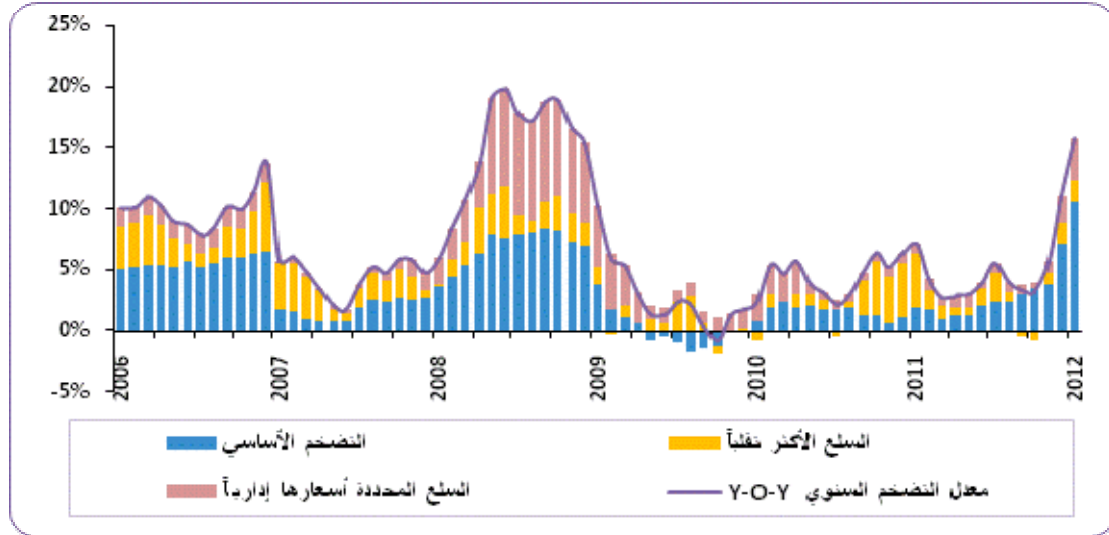
.2012

2006

(

() 2011 2012

2012 -2006 (5)



-3

2012

.1.3

%15.80	2012	
193.69	(%5.41 : 2011)	%7.42
	.2011	%2.42
		.2.3

%0.45	%22.65	2012	
%1.56	170.99	(%0.01 : 2011)	
		.2011	

.3.3

2012

:2011

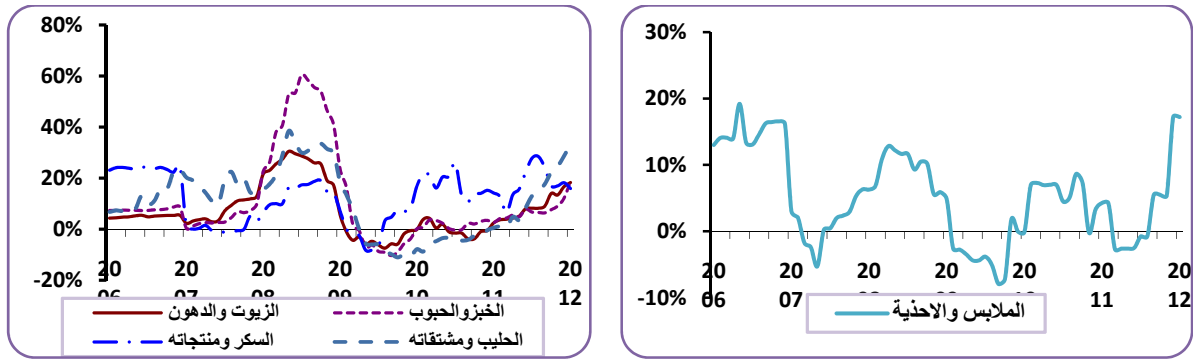
) %1.32

%17.21

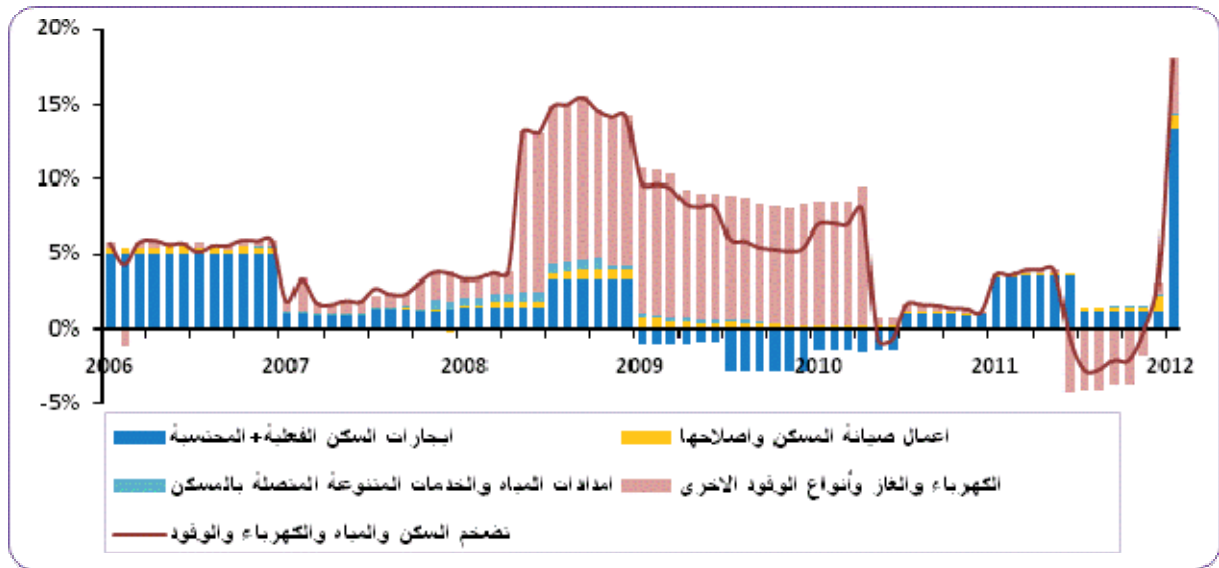
.158.28

(%0.34

(6)



(7)



.4.3

%18.07

2012

160.48

(%0.76 :2011

) %3.64

.2011

%15.89

250

400 2012

%2.69

%60

%0.73

2011

2012

(2)

2012				2011			M-O-) (M	(Y-O-Y)	(Y-O-Y)	2011	2012	%	
%2.42	%7.42	%15.80	193.69	%5.41	%12.03	167.27	41.9						
%1.56	%0.45	%22.65	170.99	%0.01	%0.34	139.41	2.2						
%0.00	%1.32	%17.21	158.28	%0.34	%4.26	135.04	8.5						
%15.89	%3.64	%18.07	160.48	%0.76	%3.63	135.92	22.1						
%0.48	%1.04	%17.79	167.94	%0.03	%0.53	142.57	6.1						
%0.00	%0.29	%5.31	136.62	%0.05	%0.83	129.73	6.2						
%2.01	%0.63	%16.89	205.17	%0.09	%2.23	175.52	3.2						
%0.00	%0.02	%0.95	91.18	%0.00	%0.06-	90.32	2.7						
%0.00	%0.04	%3.03	111.30	%0.01	%0.73	108.03	1.7						
%0.00	%0.05	%3.77	192.07	%0.18	%15.81	185.08	1.0						
%3.17	%0.34	%18.06	187.75	%0.16	%8.57	159.03	1.8						
%5.50	%0.43	%19.93	141.75	%0.11	%5.12	118.20	2.7						
%0.00	%0.00	%0.00	234.90	%0.00	%0.00	234.90	0.0	()					
%4.43	%15.67	%15.67	172.37	%7.13	%7.13	149.02	100.0	()					

.5.3

%17.79

2012

167.94

(%0.03 :2011

) %1.04

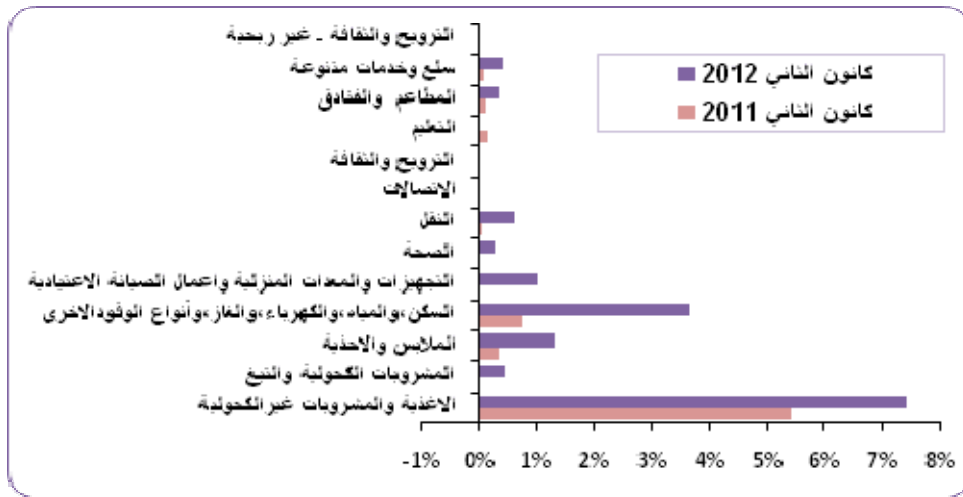
.2011

%0.48

.6.3

2012
 (%0.05 :2011) %0.29 %5.31
 .136.62

(2011 _____ 2012) (8)



.7.3

2012
 (%0.09 :2011) %0.63 %16.89
 .2011 %2.01 205.17

.8.3

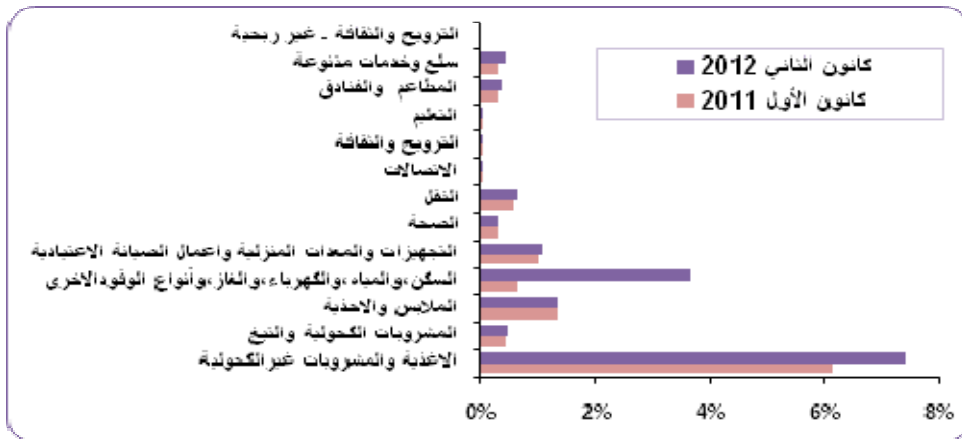
2012
 :2011) %0.02 %0.95
 .91.18 (%0.00

.9.3

2012
 :2011) %0.04 %3.03
 .111.30 (%0.01

2012
 (%0.18 :2011) %0.05 %3.77
 .192.07

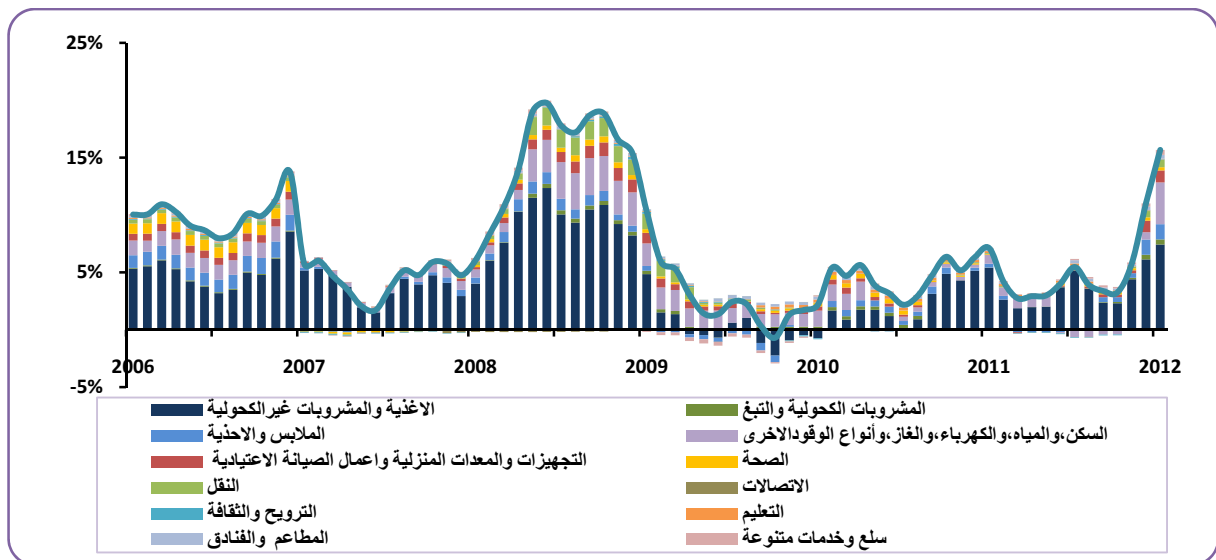
(2011 _____ 2012) (9)



2012
 :2011) %0.34 %18.06
 %3.17 187.75 (%0.16
 .2011

(CPI)

(10)



(3)

2011

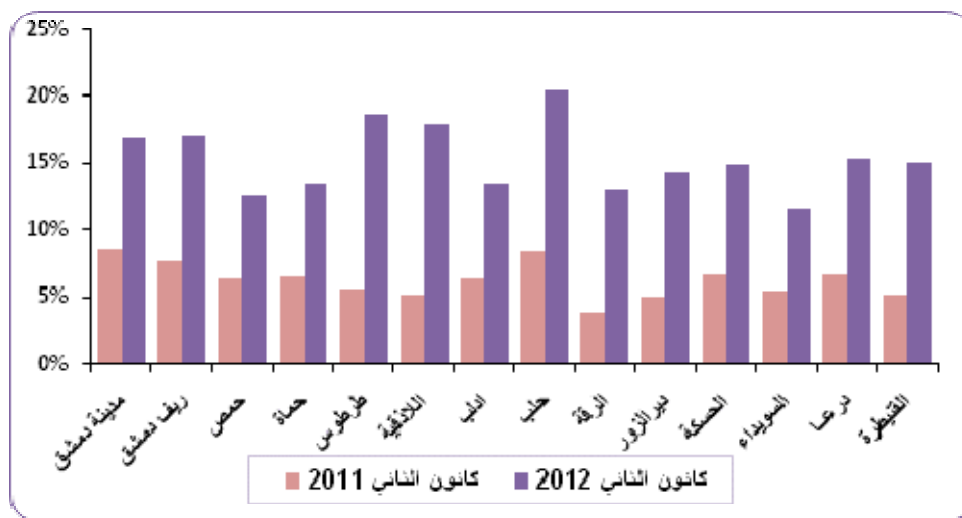
2012

2012		2011		
(Y-O-Y)		(Y-O-Y)		
%16.98	168.28	%8.68	143.85	
%17.04	160.13	%7.75	136.82	
%12.70	164.67	%6.42	146.12	
%13.53	172.30	%6.66	151.77	
%18.70	177.79	%5.73	149.77	
%17.99	171.54	%5.27	145.38	
%13.45	168.13	%6.41	148.20	
%20.49	189.13	%8.48	156.97	
%13.06	176.35	%3.83	155.98	
%14.41	179.32	%5.08	156.74	
%14.91	174.54	%6.74	151.89	
%11.69	171.00	%5.48	153.11	
%15.42	179.83	%6.80	155.81	
%15.08	175.48	%5.23	152.49	
%15.67	172.37	%7.13	149.02	

(11)

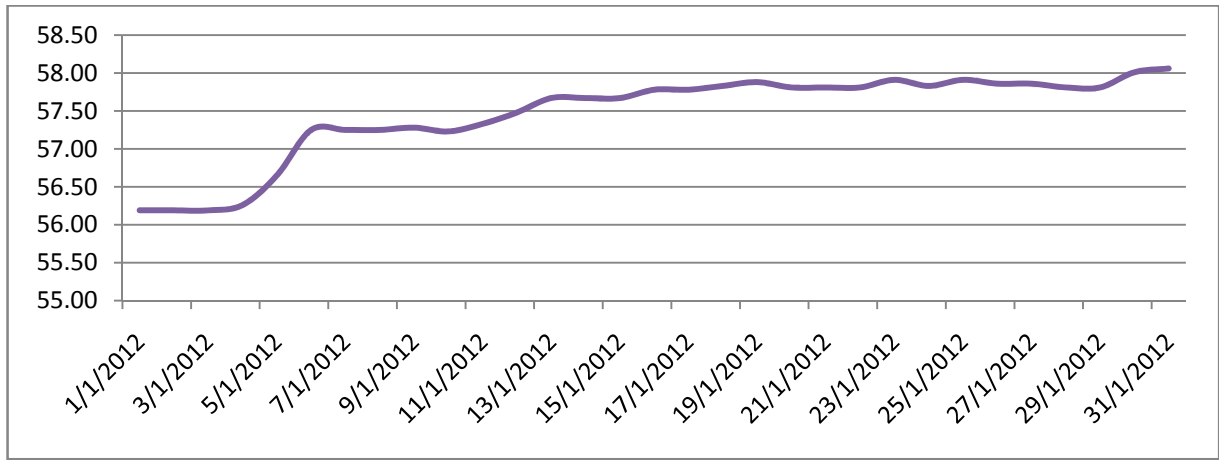
2011

2012



2012

(8)



2-5

()

1-2-5

106.89

2.63

2012

.2011

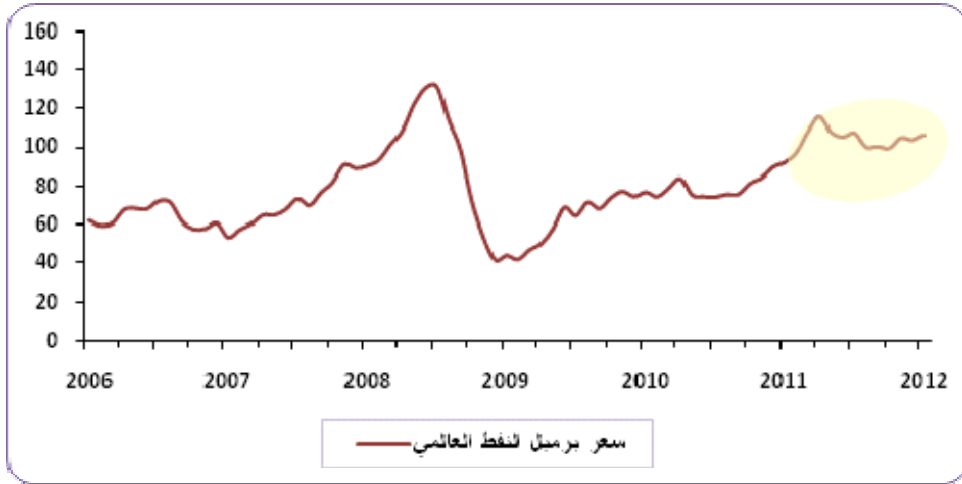
104.26

()

2011

2014

() (13)



2-2-5

2012

165.06

163.10

2011

1.96

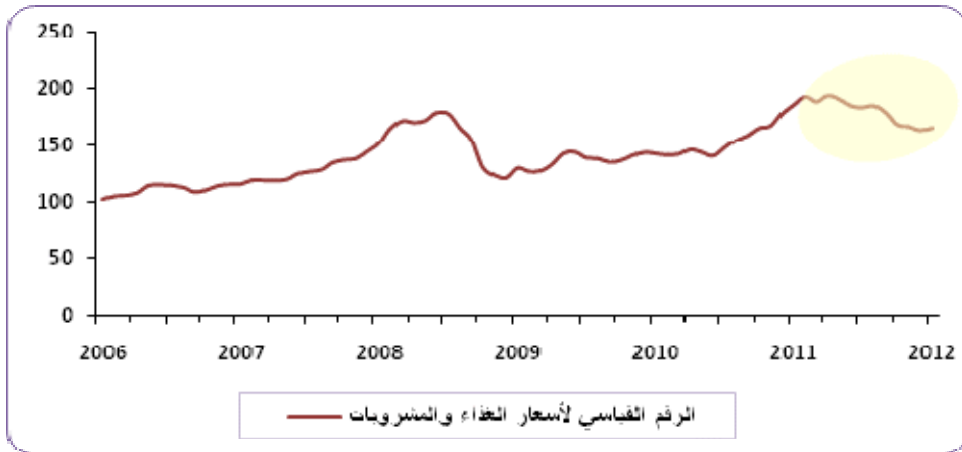
.2011

.(FAO

)

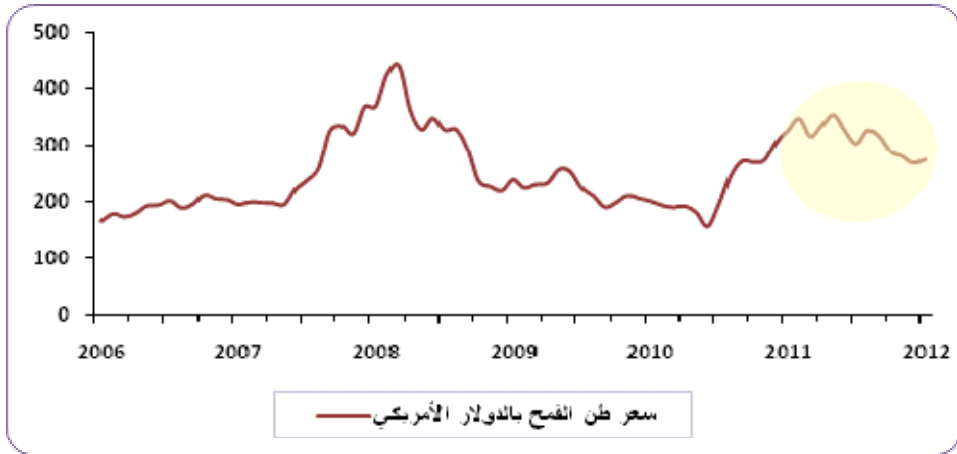
2012

(14)



()

(15)



3-2-5

2012

202.04

2011

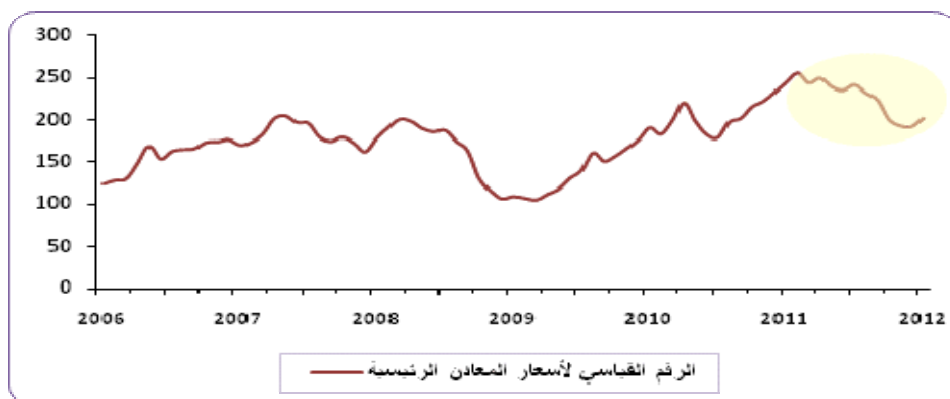
2011

9.93

2012

192.11

2014



:

(CPI)

)

(

:

:

-

:(Y-O-Y)

-

:(M-O-M)

-

(CPI)

.2005

(Year-On-Year Inflation Rate)

.M/M12

(Y-O-Y)

(Core Inflation) :

.(Core Inflation)

)
(
(
%18.16

%18.72

%63.12