



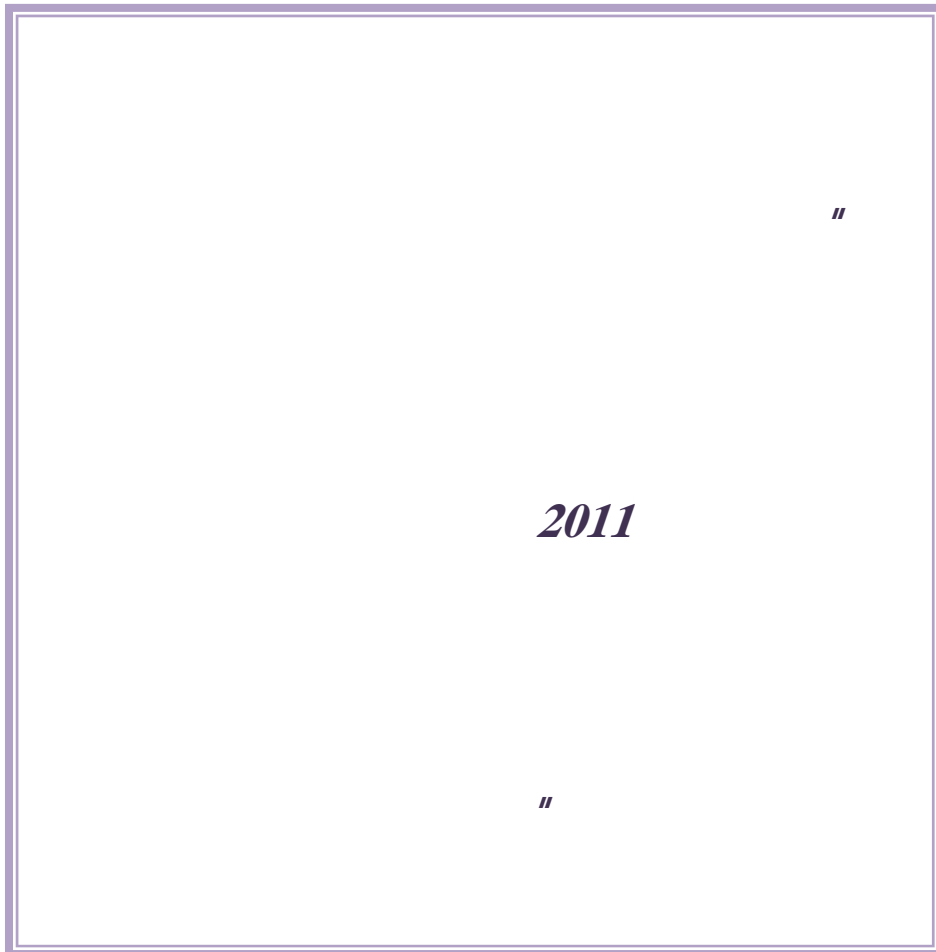
2011

2012/4/3



For Correspondence and Enquiries		:
Postal Address	The Central Bank of Syria	
	Economic Research & General Statistics Directorate	
	El-Tajrida El-Maghrabye Square	
P.O.Box	2254, Damascus	2254
E-mail	research@bcs.gov.sy	research@bcs.gov.sy
Telephone	+963 11 224 20 77	+963 11 224 20 77
Facsimile	+963 11 224 20 77	+963 11 224 20 77

2011



2011			
2011		2011	
	%4.40	2010	%4.75
			%.0.35
2011		%11.01 (Y-O-Y)	
2010		%4.68	
(Y-O-Y)		%6.32 (Y-O-Y)	
%.5.26		(%5.75 :2011)	
%11.01	2011		(Y-O-Y)
		%5.44	%12.99
		%1.46	%17.21
%1.06		%17.23	
%0.70		%3.16	
		.2011	

2011

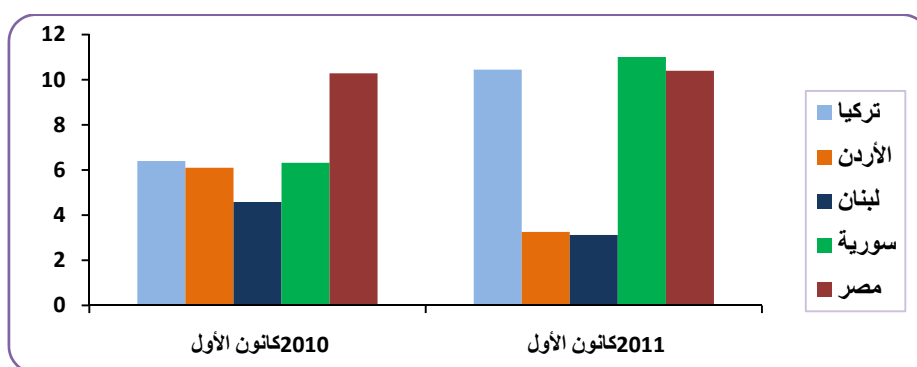
2011

_____:

2011

(%)

(1)



_____ -1

%4.40

2010

2011

%4.75

2011

2011

%3.18

%0.22

.%0.18

%11.01 2011

(Y-O-Y)

.%6.32 2010

(Y-O-Y)

%4.68

(%5.75 :2011)

(Y-O-Y)

.%5.26

%11.01

(Y-O-Y)

%42

%4.22

(%6.73) 2011

.%2.51 2011

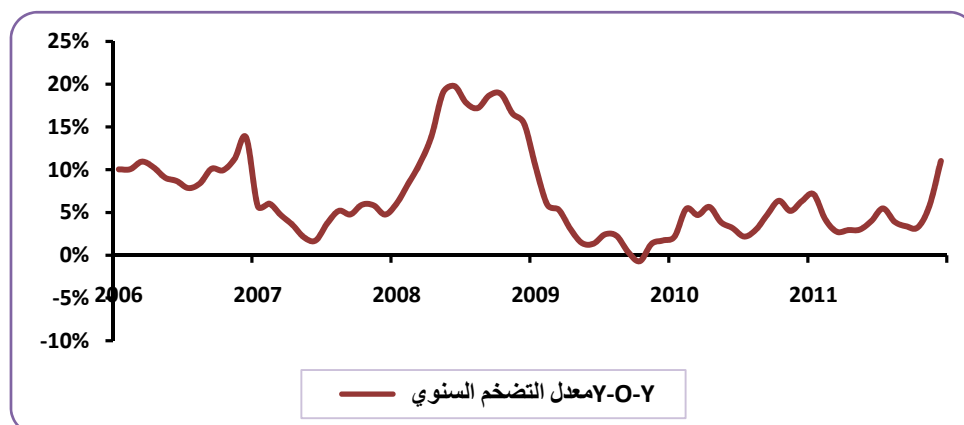
2011 -2010

(1)

		Y- O- Y		Y- O- Y				
4.40%	1.38%	4.09%	140.68	2.18%	-0.53%	139.10	1	2010
				5.41%	1.49%	141.17	2	
				4.70%	0.43%	141.78	3	
	-0.58%	4.22%	139.86	5.64%	-0.13%	141.60	4	
				3.86%	-1.45%	139.54	5	
				3.18%	-0.80%	138.44	6	
	0.69%	3.30%	140.83	2.18%	-0.35%	137.95	7	
				2.95%	1.96%	140.65	8	
				4.74%	2.29%	143.88	9	
	4.40%	5.95%	147.02	6.36%	1.56%	146.13	10	
				5.18%	0.08%	146.25	11	
				6.32%	1.67%	148.69	12	
4.75%	0.17%	4.68%	147.27	7.13%	0.22%	149.02	1	2011
				4.22%	-1.27%	147.13	2	
				2.74%	-1.00%	145.67	3	
	-1.90%	3.30%	144.48	2.93%	0.06%	145.75	4	
				2.99%	-1.39%	143.71	5	
				4.00%	0.18%	143.98	6	
	1.60%	4.23%	146.79	5.46%	1.05%	145.49	7	
				3.90%	0.45%	146.14	8	
				3.38%	1.78%	148.74	9	
	6.87%	6.69%	156.87	3.25%	1.44%	150.88	10	
				5.75%	2.51%	154.66	11	
				11.01%	6.73%	165.06	12	

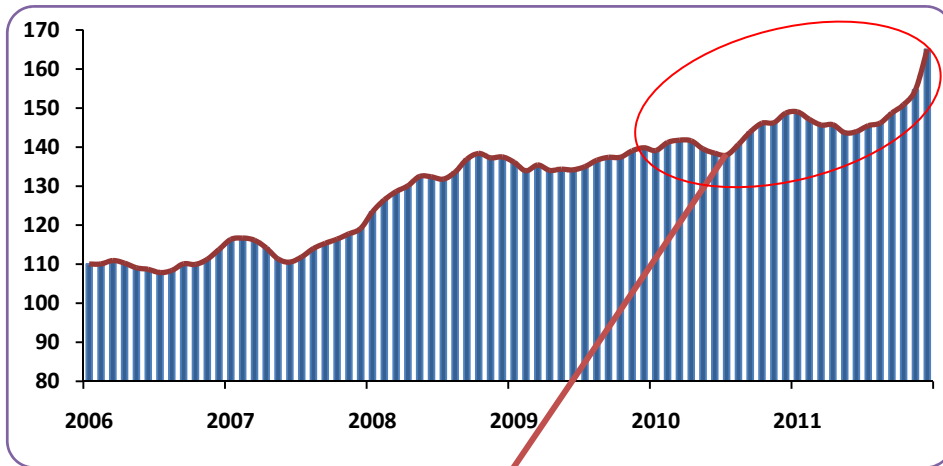
(Y-O-Y)

(2)



2011

(3)



: -2

(Y-O-Y)

		.%11.01	2011
) %5.44	%12.99		
%17.21			(%4.78 :2010
	(%0.28 :2010) %1.46
) %1.06	%17.23		
			(%0.03 :2010
%0.45		%0.46	%0.70

2011

%0.25

%0.33

%0.37

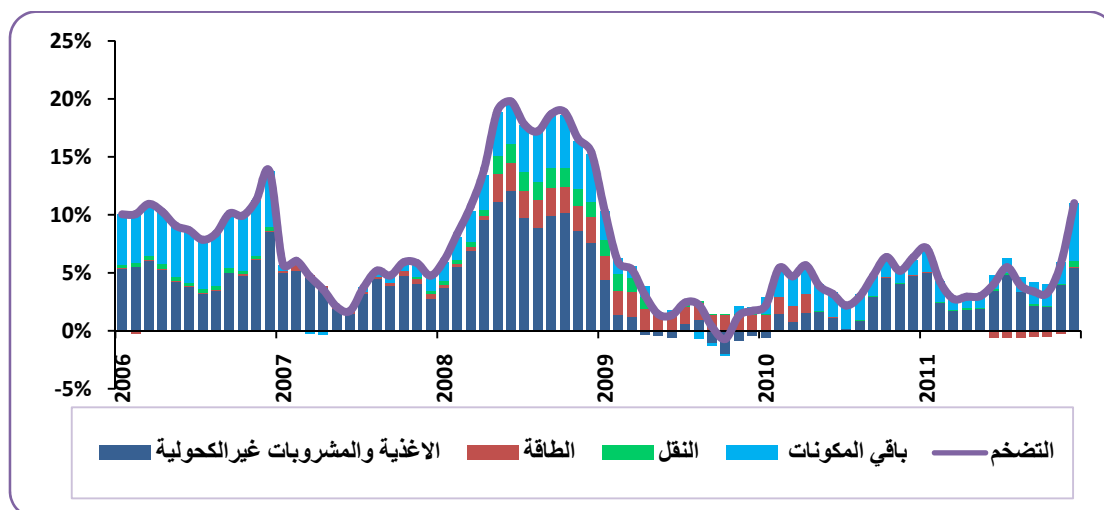
.%0.03

%0.04

%0.05

(CPI)

(4)



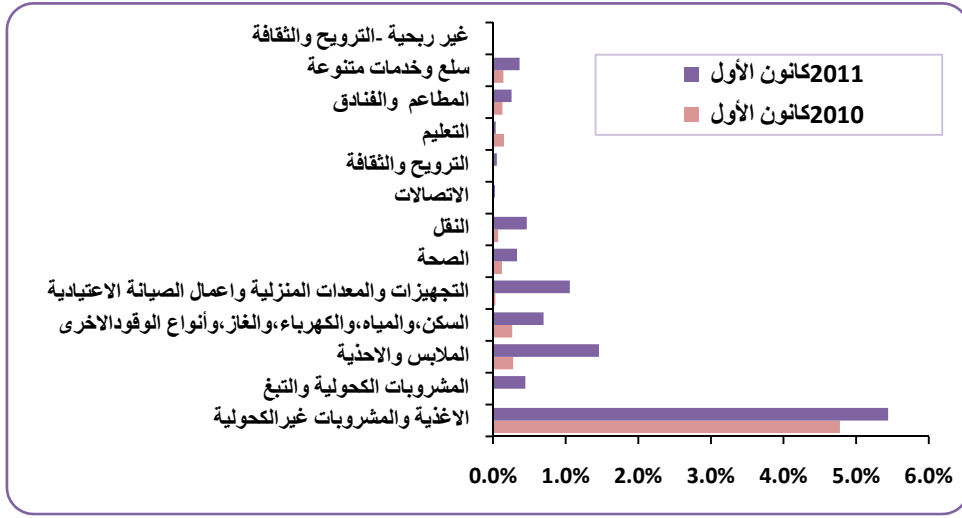
(2011

-2010

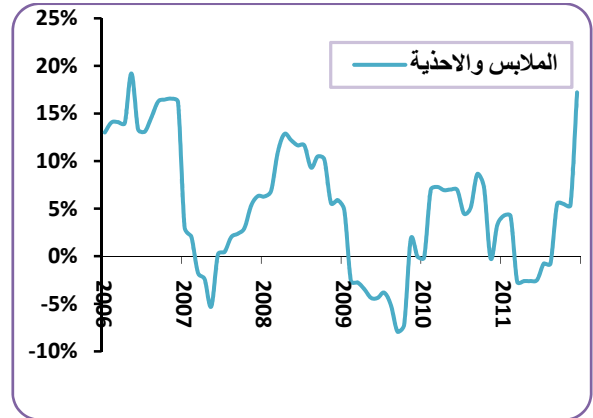
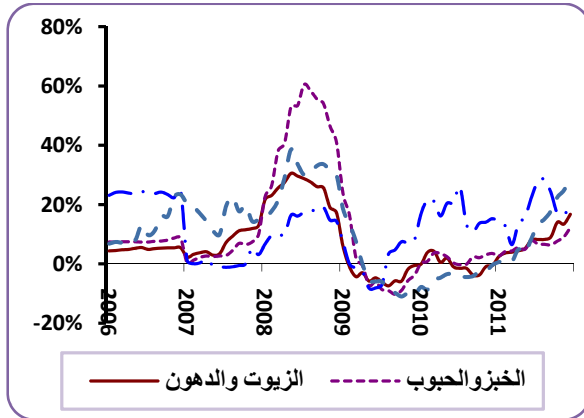
)

(2)

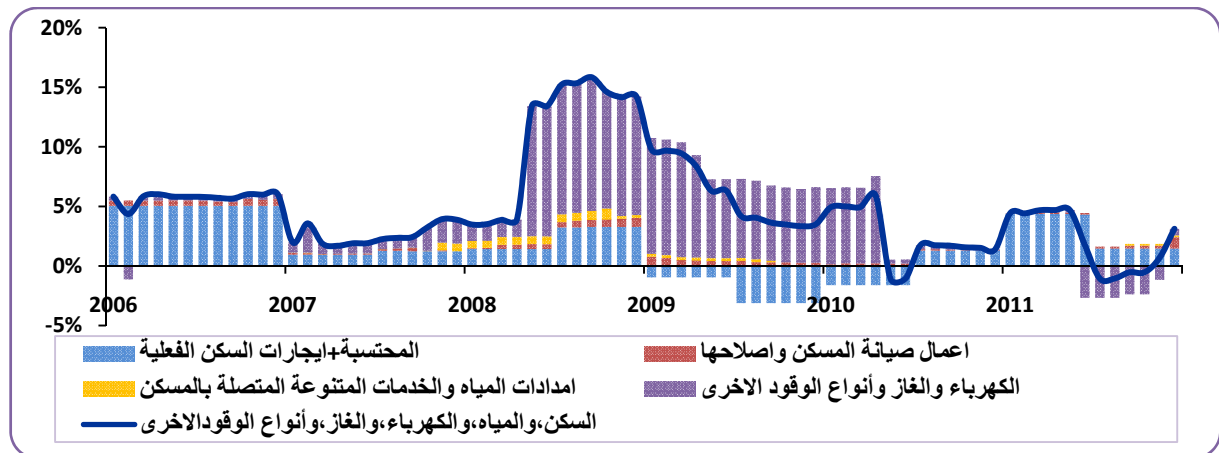
2011			2010				
5.44%	12.99%	189.11	4.78%	11.41%	167.36	41.9%	
0.45%	20.74%	168.36	0.01%	0.36%	139.44	2.2%	
1.46%	17.21%	158.28	0.28%	3.27%	135.04	8.5%	
0.70%	3.16%	138.47	0.26%	1.20%	134.23	22.1%	
1.06%	17.23%	167.14	0.03%	0.55%	142.57	6.1%	
0.33%	5.31%	136.62	0.12%	1.99%	129.73	6.2%	
0.46%	14.59%	201.13	0.07%	2.23%	175.52	3.2%	
0.03%	0.95%	91.18	0.01%	0.26%	90.32	2.7%	
0.05%	3.03%	111.3	0.02%	0.86%	108.03	1.7%	
0.04%	3.77%	192.07	0.15%	15.73%	185.08	1.0%	
0.25%	14.43%	181.98	0.13%	7.34%	159.03	1.8%	
0.37%	13.47%	134.37	0.14%	5.28%	118.42	2.7%	
0.00%	0.00%	234.9	0.00%	0.00%	234.90	0.0%	-
11.01%	11.01%	165.06	6.33%	6.33%	148.69	100.0%	()



(6)



(7)



2011

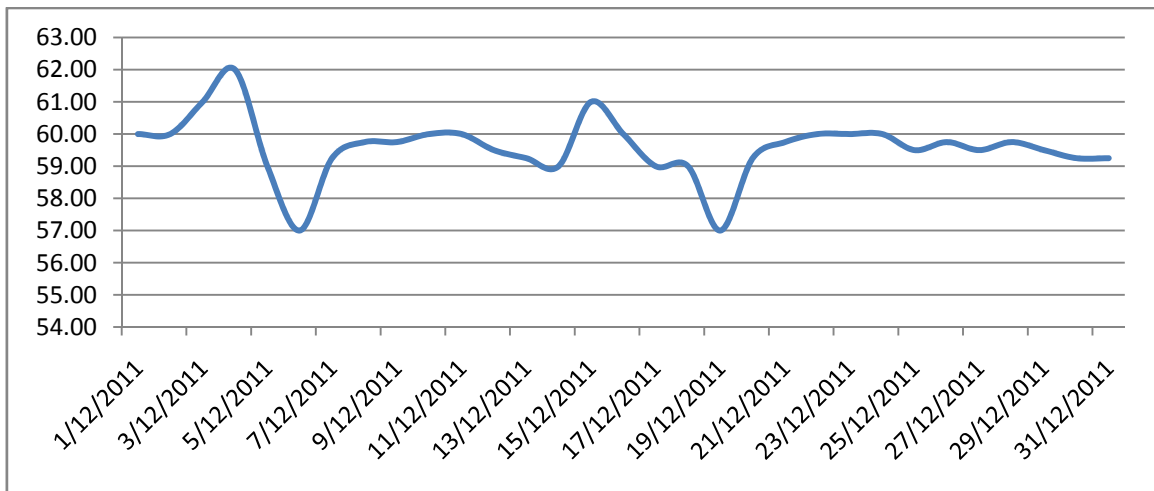
: - 3

: **1-3**

: **1-1-3**

2011

(8)



2011

: 2-3

()

: 1-2-3

2011

103.43

(1.93-)

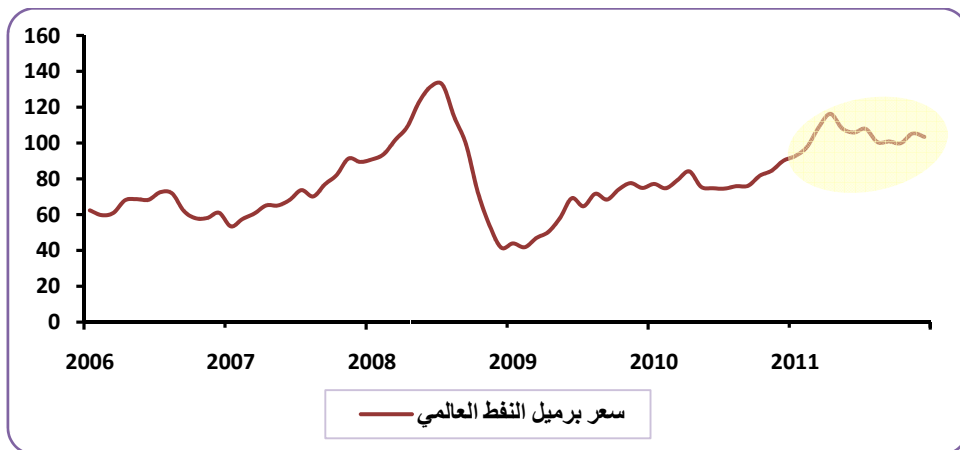
2011

.2011

105.36

S&P

() (9)



: 2-2-3

163.07

(3.44-)

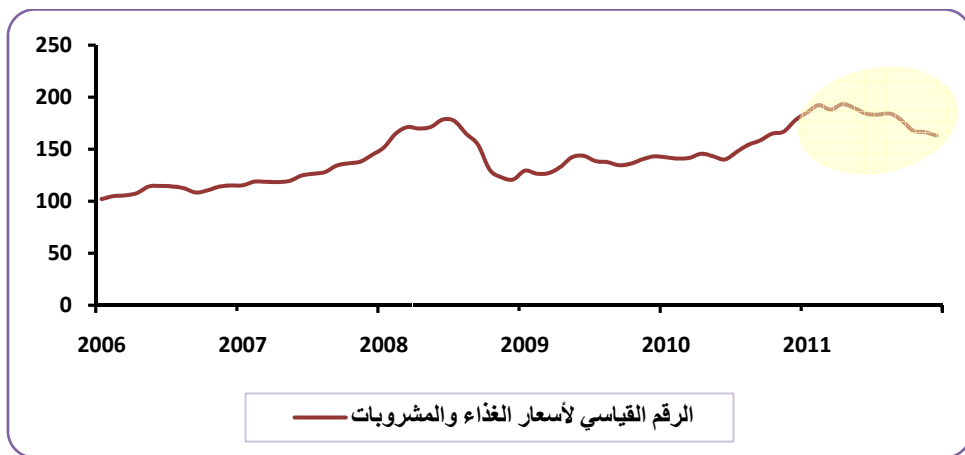
166.51

)

(FAO
2011

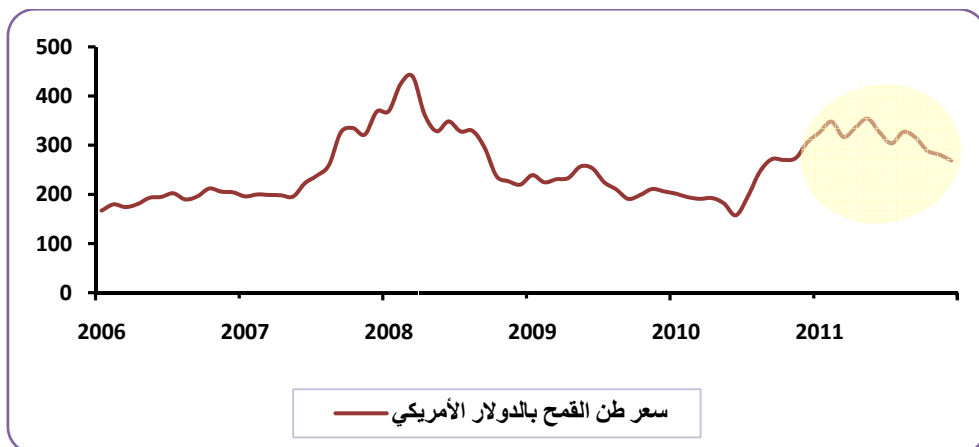
()

(10)



()

(11)



2011

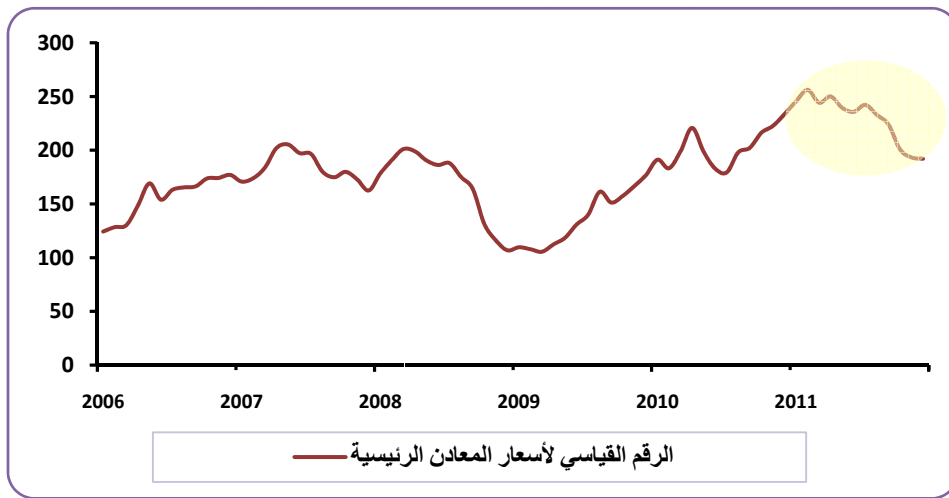
: 3-2-3

(1.17-)

192.11

. 193.28

(12)



2012/4/3