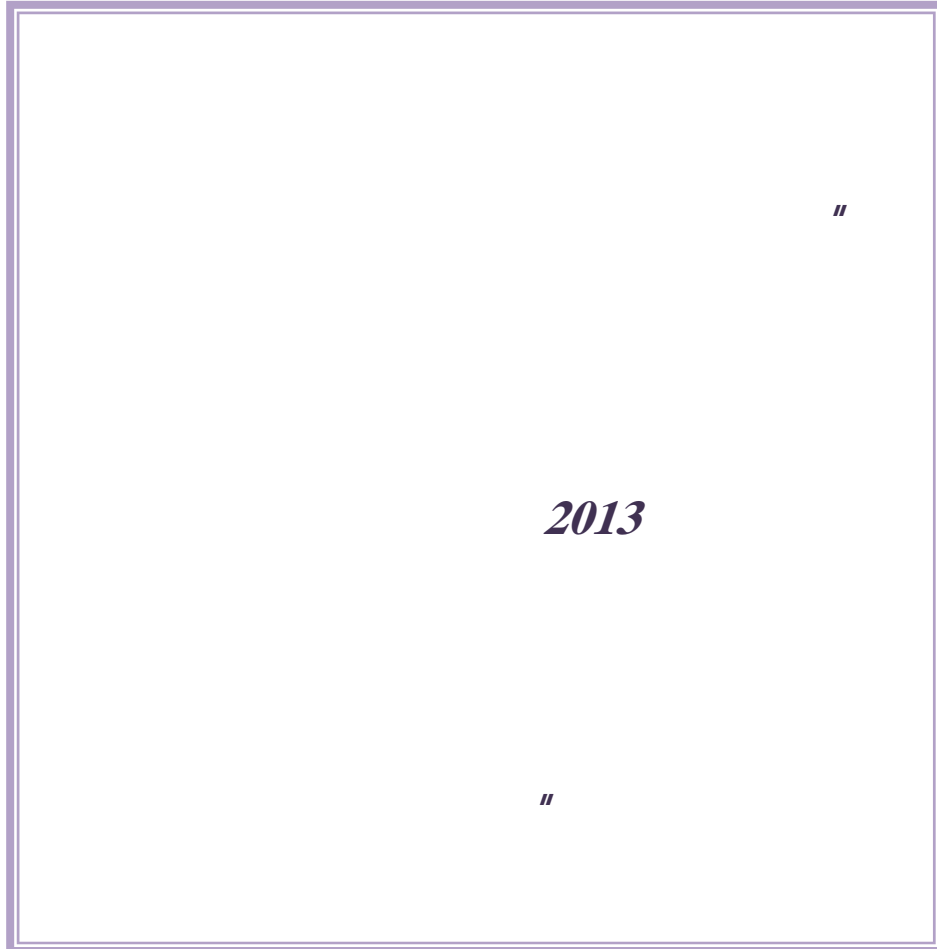




مصرف سورية المركزي
Central Bank of Syria



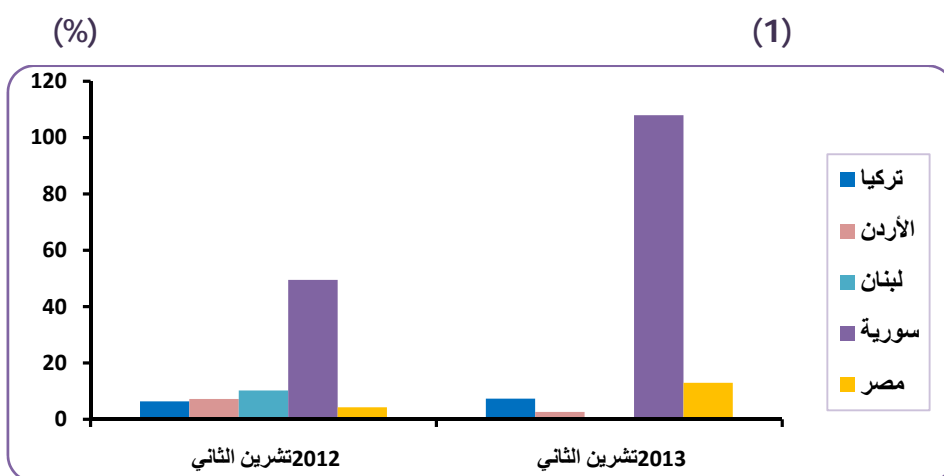
2013



2013			
	2013	2013	2013
	%89.77	2013	(-)
.%54.13		%35.64	2012
2013		(Y-o-Y)	
2012		%58.44	%107.94
		.%49.51	
%117.39	2013		.%9.45
2013		(M-o-M)	
		%3.06	%2.18-
		.%0.88	2013
%107.94	2013		(Y-o-Y)
		%62.33	%128.48
%13.44		%66.56	
	%8.64		%119.21
%7.71			
	%2.50		%4.52
	%2.14		%2.31
.%0.49	%1.11	%1.15	%1.60

2013

_____:



_____:

_____ 1.1

2013	(-)	%89.77
		%35.64		2012
		%51.06		
		%.6.30		%13.25
	%107.94	2013		(Y-o-Y)
	%.49.51	2012		%58.44
2013		(Y-o-Y)		

(1)

1

%9.45

%117.39

%2.18- (M-o-M)

%3.06

2013

%0.88

.2012

2013

-2012

(1)

	Qy-o- Qy	Q-o-Q	()	Y-o-Y	M-o-M	()		
37.45%	22.54%	15.04%	180.46	15.67%	4.43%	172.37	1	2012
				21.34%	3.58%	178.53	2	
				30.77%	6.70%	190.49	3	
	33.35%	6.76%	192.66	31.45%	0.58%	191.59	4	
				32.51%	-0.60%	190.43	5	
				36.10%	2.90%	195.96	6	
	41.29%	7.65%	207.40	36.13%	1.07%	198.06	7	
				39.49%	2.93%	203.86	8	
				48.10%	8.06%	220.28	9	
	51.63%	14.69%	237.86	49.87%	2.65%	226.12	10	
				49.51%	2.26%	231.24	11	
				55.23%	10.81%	256.22	12	
89.77%	53.81%	16.70%	277.58	52.40%	2.53%	262.70	1	2013
				51.50%	2.96%	270.48	2	
				57.25%	10.75%	299.55	3	
	73.97%	20.75%	335.16	61.29%	3.16%	309.01	4	
				68.03%	3.55%	319.98	5	
				92.13%	17.66%	376.50	6	
	118.94%	35.48%	454.07	113.98%	12.57%	423.80	7	
				121.29%	6.45%	451.12	8	
				121.22%	8.02%	487.30	9	
				117.39%	0.88%	491.56	10	
				107.94%	-2.18%	480.84	11	

:(M-o-M)

-

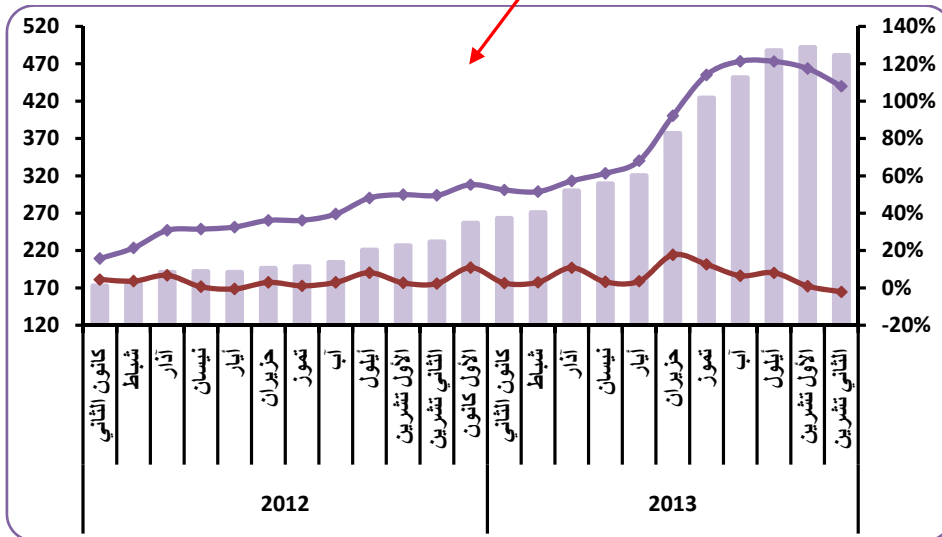
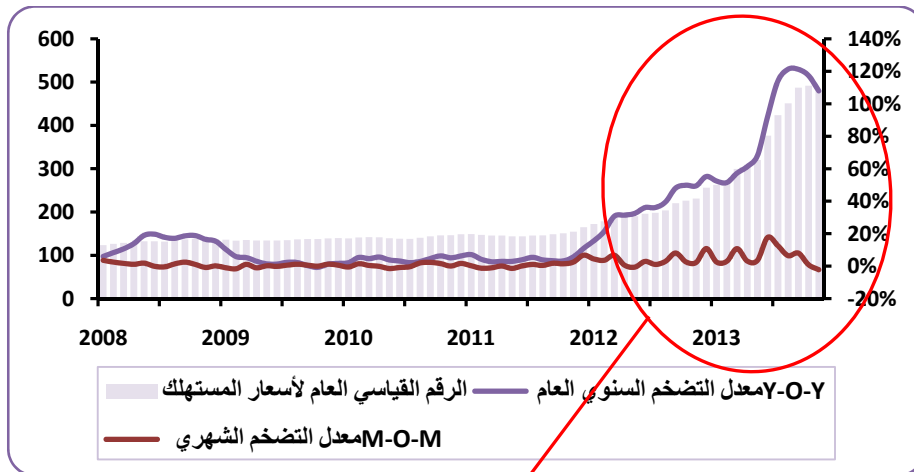
:(Q-o-Q)

-

:(Qy -o- Qy)

-

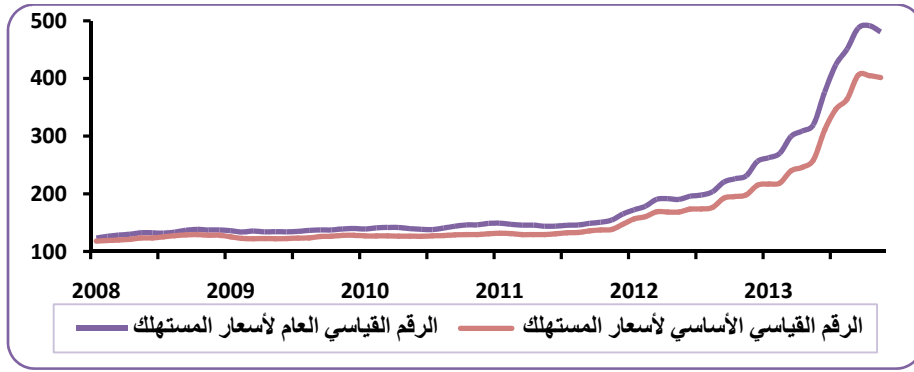
(2)



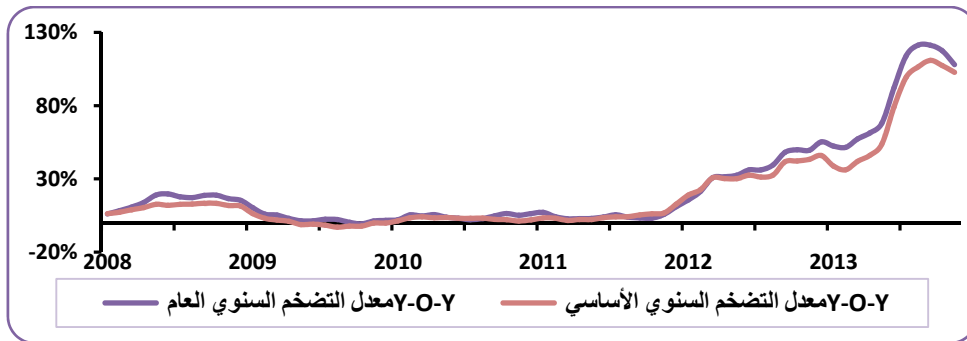
1 (Core Inflation) -2

2013	102.77%	(Y-o-Y)	2012	59.49%
2013	107.36%	(M-o-M)	2012	4.59%
2013	43.28%	(M-o-M)	2012	4.59%

2013 -2008 (3)



2013 -2008 (4)



(Y-o-Y)

(Y-o-Y)

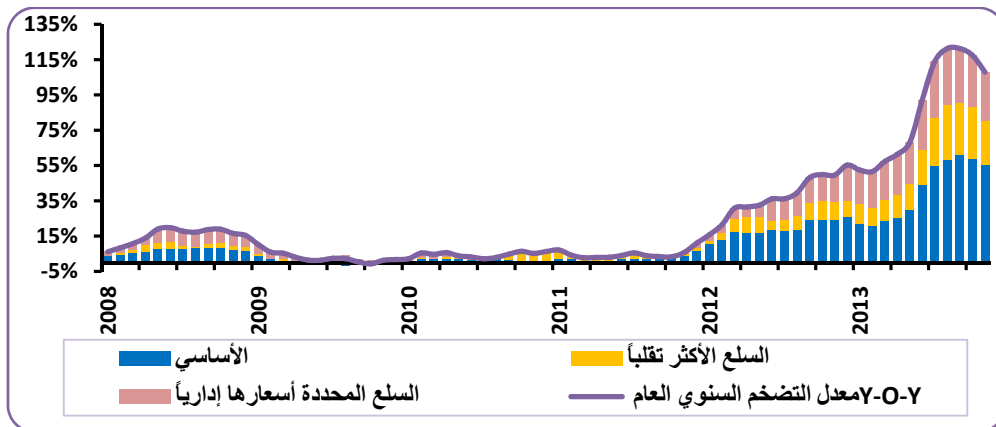
(%5.17)

2013

.2013

2008

2013 -2008 (5)



:2013

.1.3

612.26 %128.48
 2013) %62.33
 (%24.29 :2012)
 .2013 %4.00

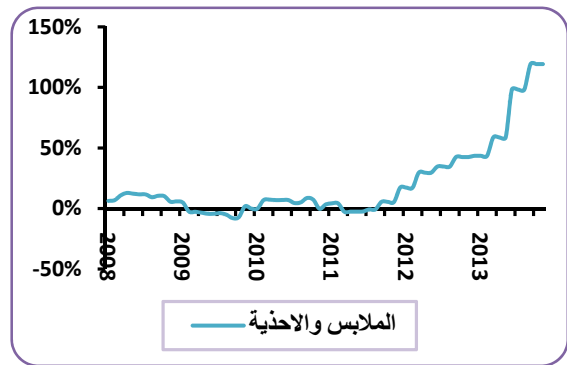
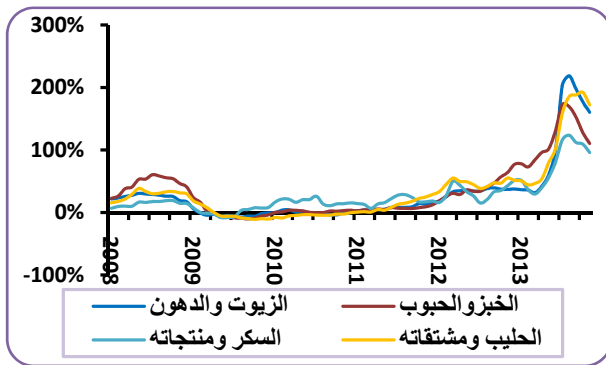
.2.3

) %2.31 %78.54 2013
 %1.75 565.99 (%2.35 :2012
 .2013

.3.3

2013) %8.64 %119.21
 :2012)
 .433.22 (%3.23

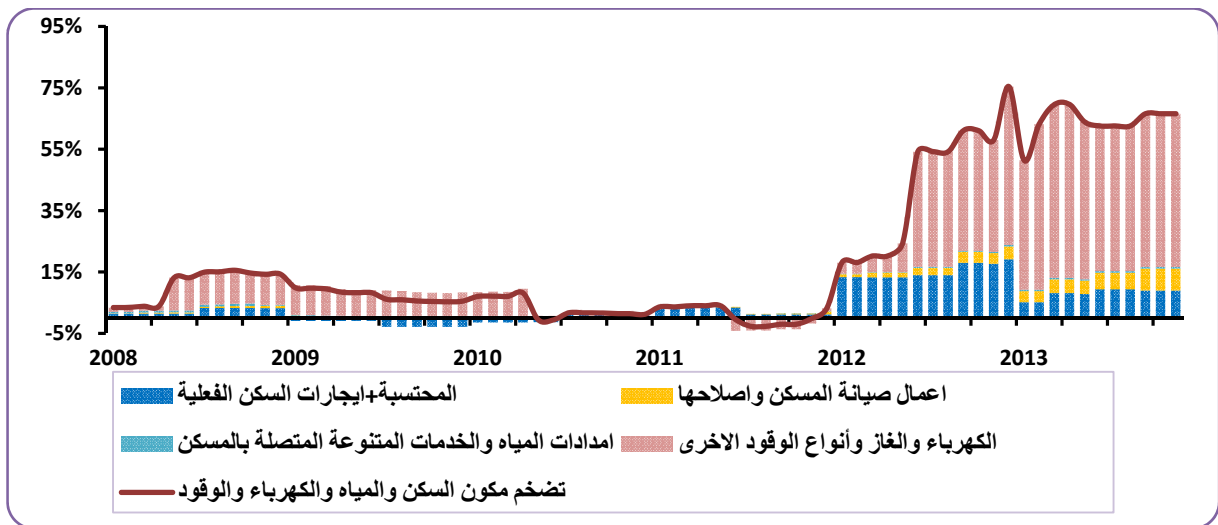
(6)



.4.3

%13.44 %66.56 2013
 .352.48 (%11.08 :2012)

(7)

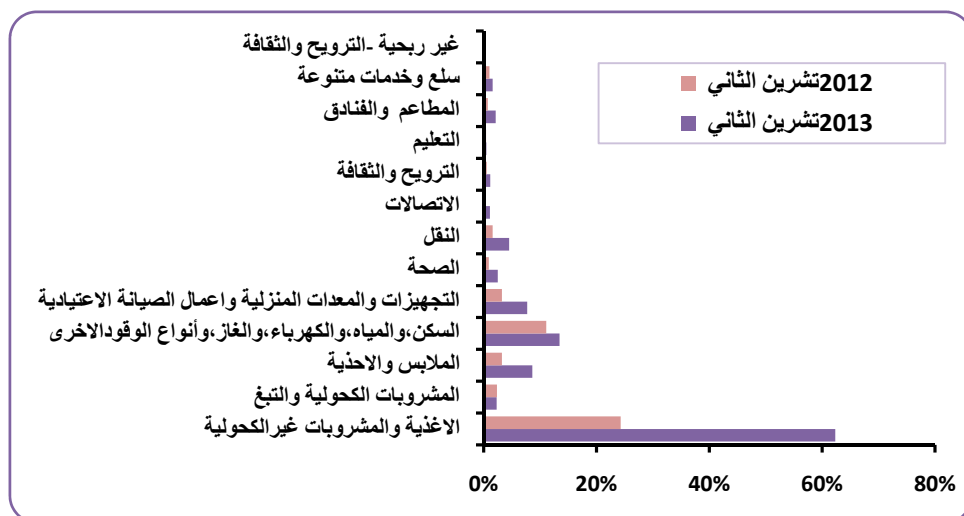


.5.3

128.09% 2013
 517.94 (2012 : 3.24%)) 7.71%

.6.3

2013
 :2012) 2.50% 59.19%
 .248.95 (%0.89
 (2012 2013) (8)



2013

:2012

) %4.52

%126.69

.586.49

(%1.59

2012

2013

(2)

2013				2012			%	
(M-o-M)		(Y-o-Y)			(Y-o-Y)			
-4.00%	62.33%	128.48%	612.26	24.29%	50.35%	267.97	41.9	
1.75%	2.31%	78.54%	565.99	2.35%	115.12%	317.01	2.2	
0.00%	8.64%	119.21%	433.22	3.23%	42.50%	197.63	8.5	
0.00%	13.44%	66.56%	352.48	11.08%	57.99%	211.62	22.1	
0.00%	7.71%	128.09%	517.94	3.24%	56.24%	227.08	6.1	
0.00%	2.50%	59.19%	248.95	0.89%	16.53%	156.38	6.2	
0.00%	4.52%	126.69%	586.49	1.59%	42.68%	258.72	3.2	
0.00%	1.11%	101.40%	190.10	0.08%	5.26%	94.39	2.7	
0.00%	1.15%	102.06%	303.01	0.55%	48.11%	149.97	1.7	
0.00%	0.49%	45.71%	372.85	0.41%	34.61%	255.89	1.0	
0.00%	2.14%	117.61%	518.61	0.74%	37.61%	238.31	1.8	
-2.88%	1.60%	73.55%	320.93	1.04%	46.77%	184.92	2.7	
0.00%	0.00%	16.17%	327.47	0.00%	20.00%	281.87	0.0	()
-2.18%	107.94%	107.94%	480.84	49.51%	49.51%	231.24	100.0	()

.(2013

)

2013

:(M-o-M)

-

-

...

_____:

.8.3

2013
:2012) %1.11 %101.40
.190.10 (%0.08

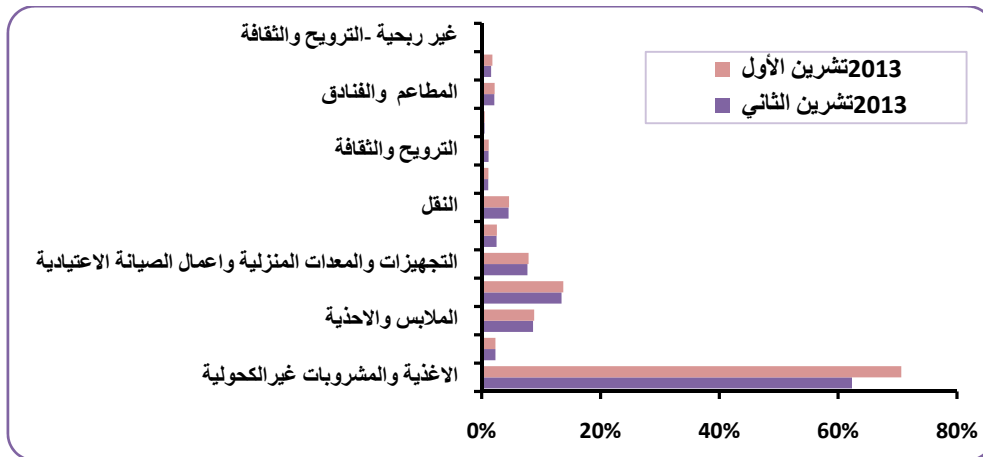
.9.3

2013
:2012) %1.15 %102.06
.303.01 (%0.55

.10.3

2013
:2012) %0.49 %45.71
.372.85 (%0.41

(2013 2013) (9)



.11.3

2013
) %2.14 %117.61
.518.61 (%0.74 :2012

.12.3

) %1.60 %73.55 2013

%2.88-

320.93

(%1.04 :2012

.2013

- .13.3

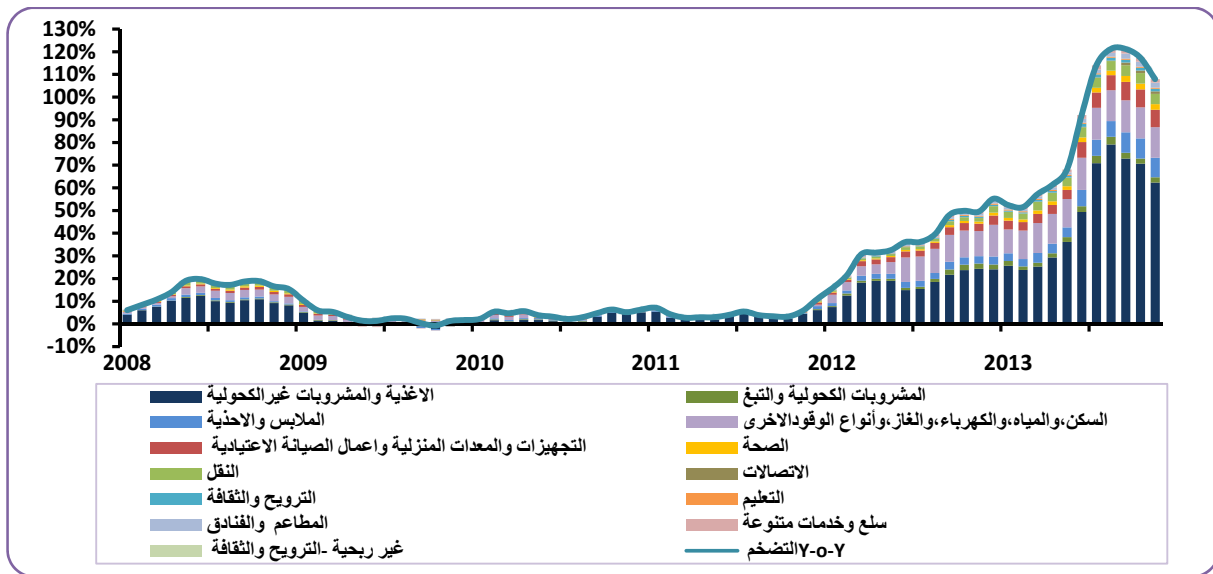
%16.17

2013

.327.47

(CPI)

(10)



: (Y-o-Y) -4

2013

2012

%130.34

%120.99

%22.39

%116.99

%94.84

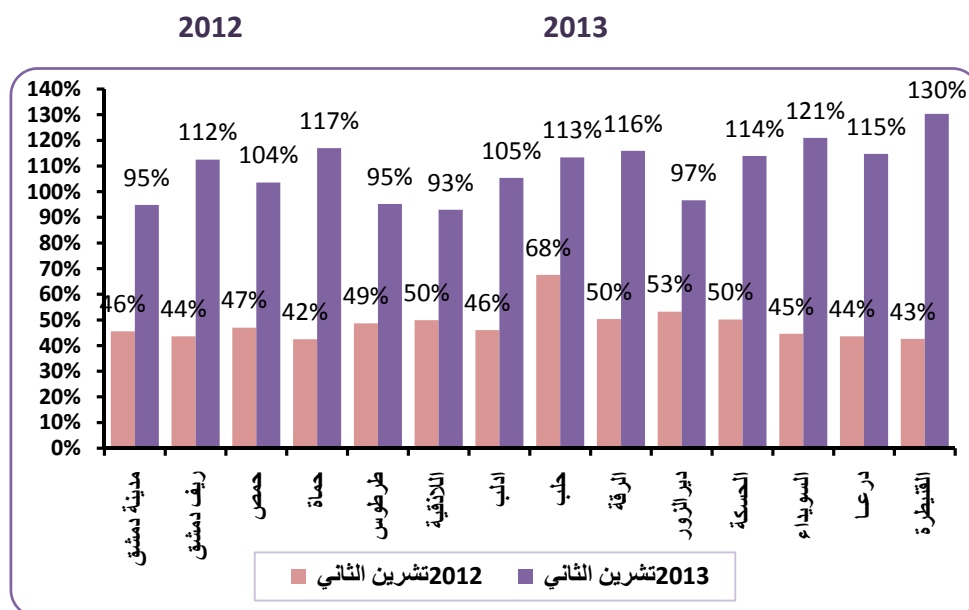
%92.95

%13.10 %15.00

(3)

2012		2013		
2013		2012		
(Y-o-Y)		(Y-o-Y)		
94.84%	416.92	45.54%	213.98	
112.50%	448.35	43.61%	210.99	
103.57%	454.56	46.98%	223.29	
116.99%	486.89	42.47%	224.38	
95.19%	445.77	48.66%	228.38	
92.95%	437.39	49.91%	226.69	
105.36%	460.42	46.02%	224.20	
113.38%	588.65	67.57%	275.87	
115.92%	520.82	50.33%	241.21	
96.67%	495.96	53.23%	252.18	
113.92%	511.06	50.18%	238.90	
120.99%	501.47	44.63%	226.92	
114.76%	499.07	43.63%	232.38	
130.34%	528.02	42.60%	229.24	
107.94%	480.84	49.51%	231.24	

(11)



: -5

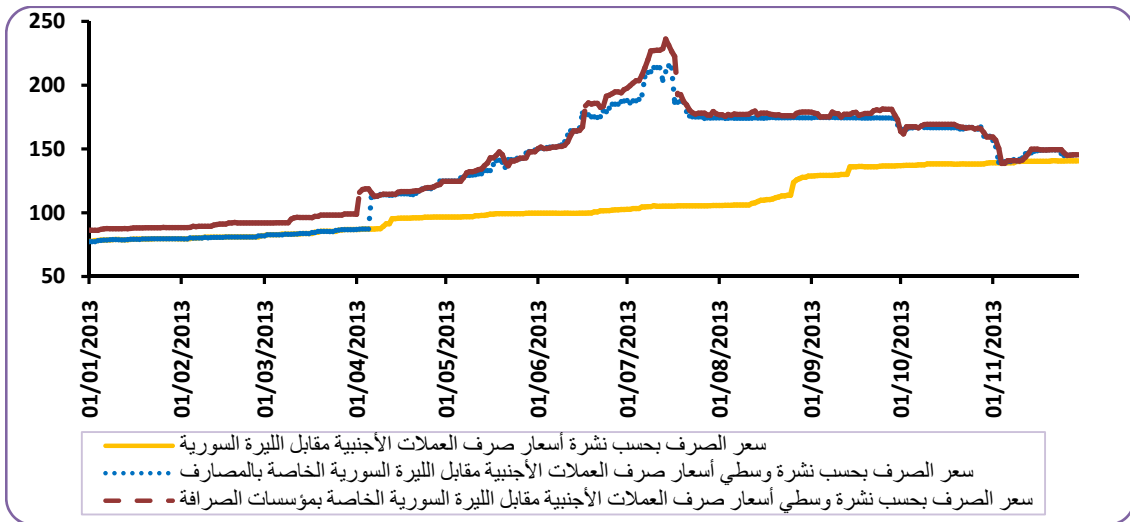
: 1-5

: 1-1-5

(0.66) (0.75)

2013

(12)



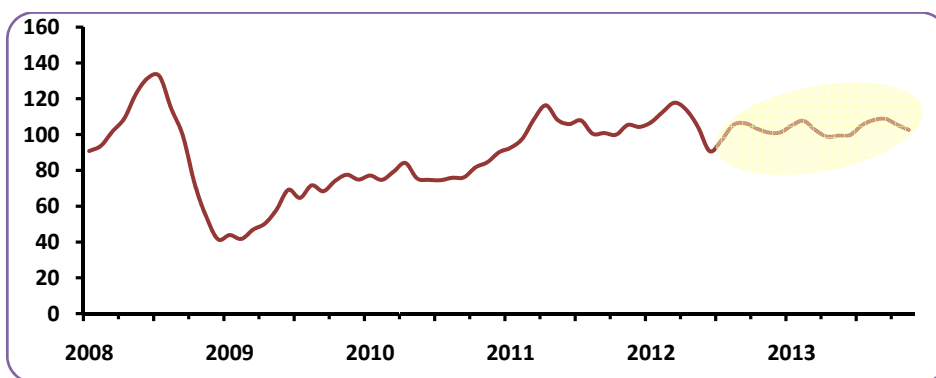
: 2-5

: 1-2-5

102.58 2013

105.46 2013 2.88

() (13)



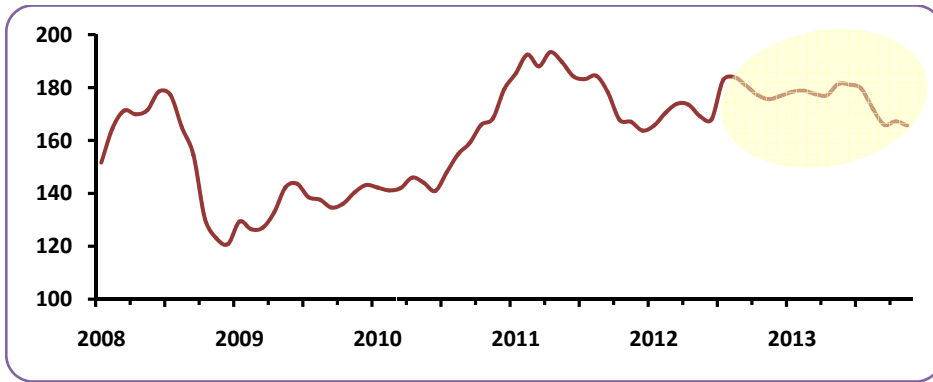
: 2-2-5

165.68 2013

167.20 2013 1.52

.(FAO)

(14)



2013

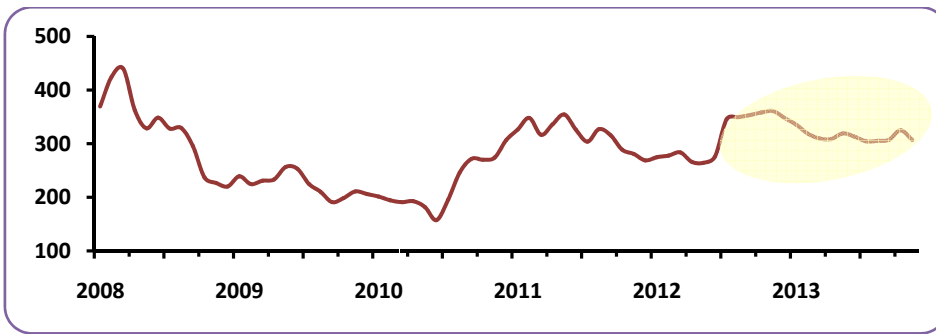
306.75

325.07

2013

18.32

() (15)



:

3-2-5

177.96

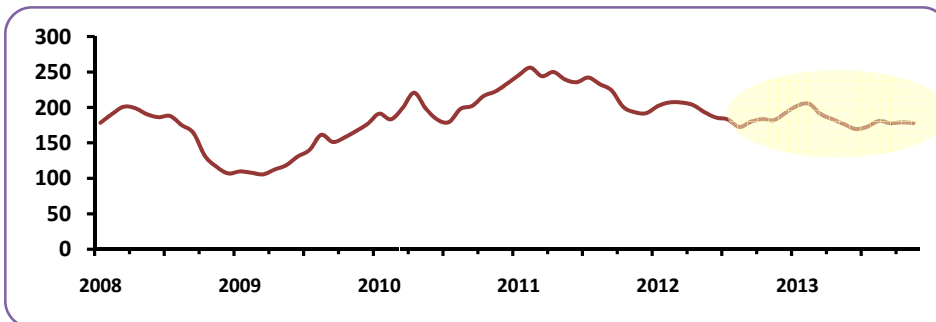
2013

179.02

2013

1.06

(16)



:

(CPI)

()

:

: -

:(Y-O-Y)

-

:(M-O-M)

-

(CPI)

.2005

(Year-On-Year Inflation Rate)

.M/M12

(Y-O-Y)

(Core Inflation) :

.(Core Inflation)

)
(
()
%18.16
%18.72
%63.12